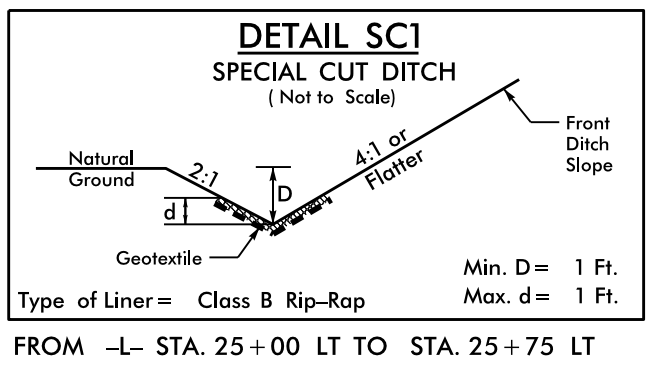


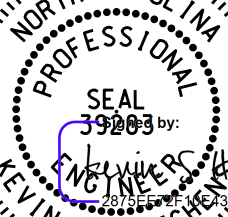
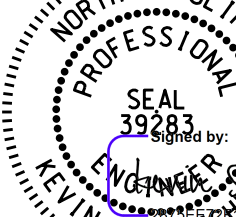
RW REVISION 11/22/2023 - PARCEL 1Z TUE ADDED FOR DETOUR AND UTILITY RELOCATION

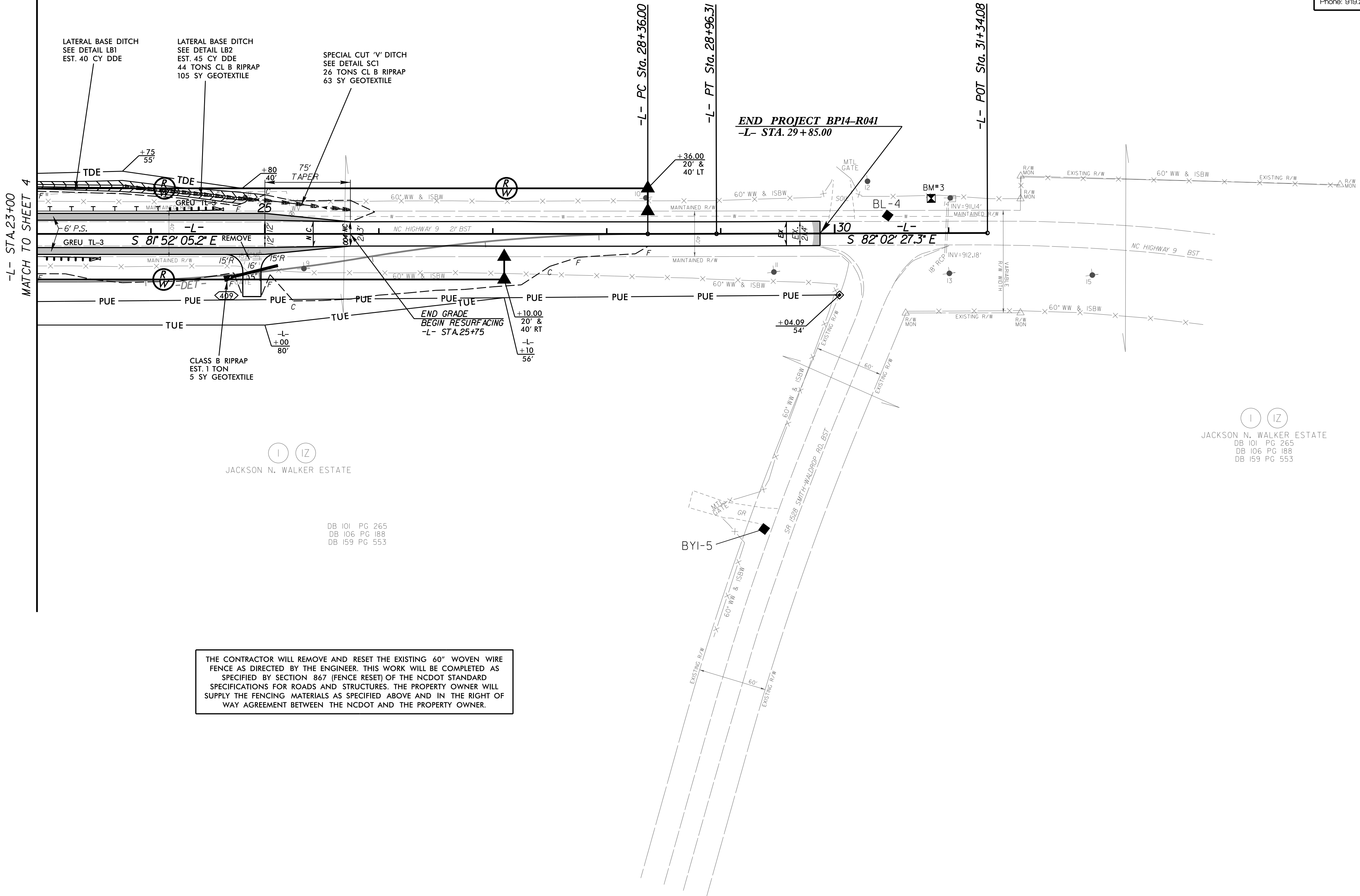
p:/JUBS/V
2:49.47 p

NAD 83/2011

(1) (12)
 JACKSON N. WALKER ESTATE
 DB 101 PG 265
 DB 106 PG 188
 DB 159 PG 553

(1) (12)
 JACKSON N. WALKER ESTATE
 DB 101 PG 265
 DB 106 PG 188
 DB 159 PG 553

PROJECT REFERENCE NO.		SHEET NO.	
BPI4-R04I		5	
RW SHEET NO.			
ROADWAY DESIGN ENGINEER		HYDRAULICS ENGINEER	
			
<p align="center">DOCUMENT NOT CONSIDERED FINAL UNLESS ALL SIGNATURES COMPLETED</p>			
<p>Weston & Sampson^{INC}</p> <p>WSE of North Carolina, PC 2052 Energy Drive Phone: 919.297.0220</p>		<p align="right">NC License: C-4847</p> <p align="right">Apex, NC 27502 westonandsampson.com</p>	



FOR -L- PROFILE, SEE SHEET NO. 6